

ZOOMLION

H e a v y I n d u s t r y & S c i e n c e

■ ZLJ 系列混凝土泵车

ZLJ Series of Truck-Mounted Concrete Pump



中联重科 创造重工与科技的完美结合

A Golden Combination of Heavy Industry and Science



ZOOMLION

ZLJ系列混凝土泵车拥有多种规格。其整机技术性能先进，作业面广，输送效率高。主要配套件均选用国际顶级品牌：如德国奔驰、瑞典沃尔沃、日本五十铃底盘，确保ZLJ系列混凝土泵车的高品质。

上装采用高强度抗疲劳合金钢和最新结构设计，使布料臂的结构重量更轻，力学性能更好；“R”型及“Z”型的臂架，布料工作范围大；回转减速度、回转支承、电液比例换向控制阀、平衡阀、遥控器等关键件均使用世界知名产品，使布料臂质量可靠、运行更加平稳；输送管弯头为精密铸造，内径壁厚为曲线成型，提高了使用寿命。

中联重科自制泵送系统采用全国独有的三泵双回路（泵送回路、分配回路）、双主泵合流闭式回路系统，使系统更简单，元件寿命延长，可靠性更高。

中联重科混凝土泵车是您的最佳选择！

ZLJ Series of truck-mounted concrete pumps have various types. The whole machine is advanced in technology, wide in operation range and high in efficiency for delivery. The imported elements are all from international famous companies such as chassis of Germany Benz, Swedish VOLVO, Japanese ISUZU. All of them ensure high quality of ZLJ Series of truck-mounted concrete pumps.

The boom made of high resistant alloy steel is of updated design, which with less weight and great stress performance. Each placing boom of ÖRÖ type or ÖZÖ type has wide working range. And the rotation transmission, slew rings, electro-hydraulic proportional control valve, balance valve, remote control, etc., are all from international famous companies. All of them ensure high reliability and steady of the boom. The fine molten concrete bend has the curve shaped inner thickness, which prolongs its working life.

The pumping hydraulic system is double main pumps interflow closed loop system, composed of pumping circuit and distributing circuit, with long life components, which make the system more simple and more reliably.

ZOOMLION's truck-mounted concrete pump is your best choice!



产品型谱

Z L J 5280THB125-37

Z L J 5291THB125-37

Z L J 5292THB125-37

Z L J 5293THB125-37

Z L J 5380THB125-44

Z L J 5391THB125-44

Z L J 5392THB125-44

Z L J 5393THB125-44

Z L J 5420THB125-47

Z L J 5410THB125-47

国际科技合作世界顶级品牌独特支持

International cooperation in science and technology
Supported by the famous brands in the world

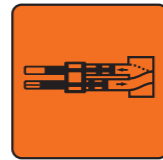
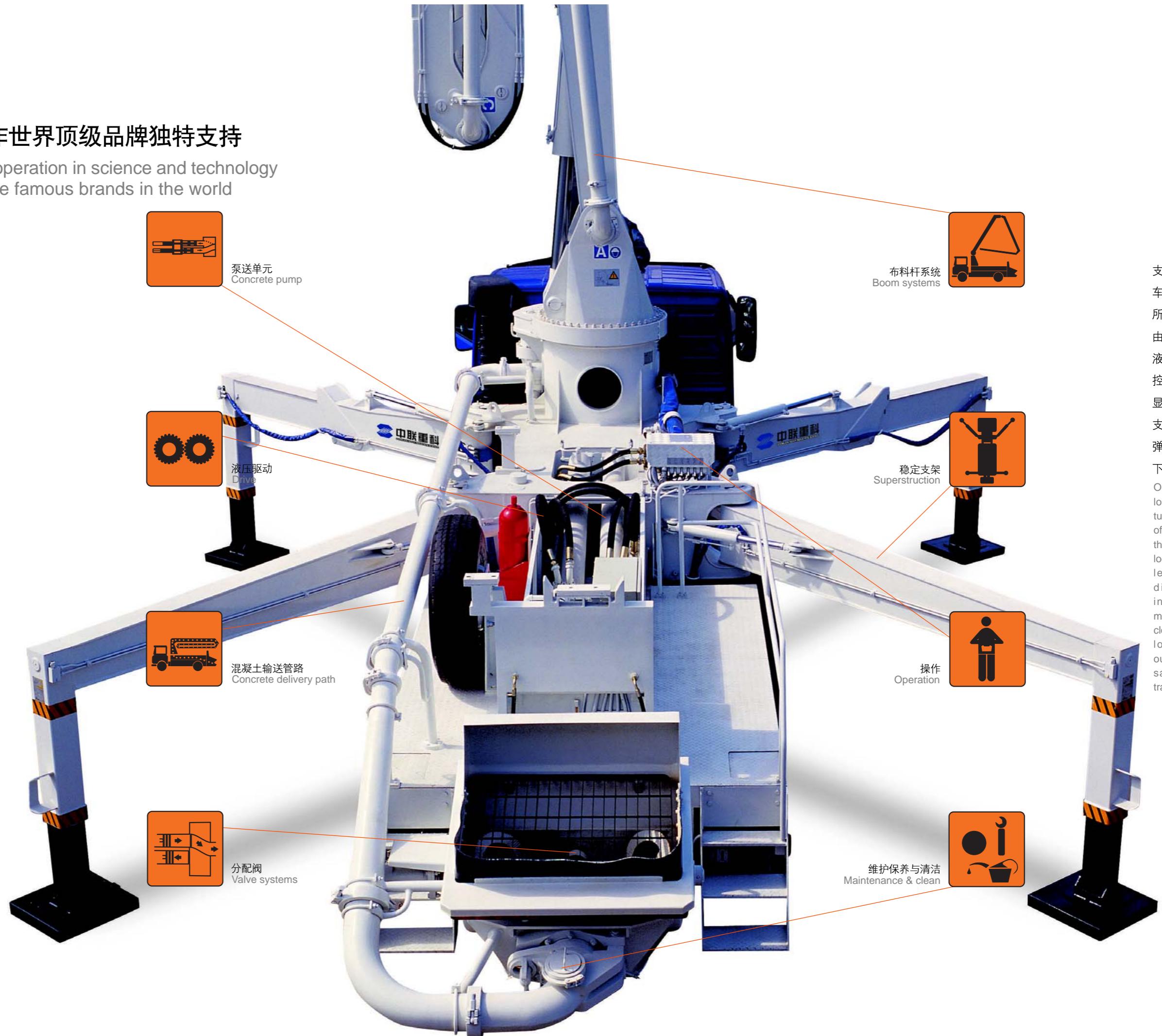
ZOOMLION



装备行程限制阀及缓冲阀的布料臂回转机构，确保臂架运行平稳。
The slewing mechanism on the placing boom is equipped with stroke limiting valve and rotation control valve in order to keep the boom steady in operation.



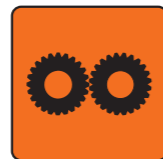
臂架上的输送管采用标准的管卡，可用于转动连接及一般管道连接；输送管中的弯管和直管都有统一标准，互换性好。
The standard coupling of the delivery pipeline on the boom may be used as rotary joint or common joint. The same sized bend tube and straight tube ensures the best changeability.



泵送单元
Concrete pump



布料杆系统
Boom systems



液压驱动
Drive



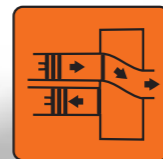
稳定支架
Superstructure



混凝土输送管路
Concrete delivery path



操作
Operation



分配阀
Valve systems



维护保养与清洁
Maintenance & clean

支腿操作台位于车的两侧，所有支腿动作由手动液压阀控制，液压锁锁定。控制手柄附近的水平仪显示整车的水平状态。支腿缩放处均装有弹簧锁，可将行驶状态下的支腿方便、安全地固定。
Outrigger control boards are located on both sides of the turret structure. All the motion of the outriggers is controlled through distributor levers and locked by hydraulic locks. The level indicator near the distributor shows the inclination of the whole machine. Near the position of closed outriggers is the spring lock which can fix the outriggers conveniently and safely when the truck is traveling.



ZOOMLION

我们是建设机械的专家

We are construction machinery experts



采用德国进口优质分动箱，
以缓冲垫弹性固定，
利用汽车动力驱动液压泵。

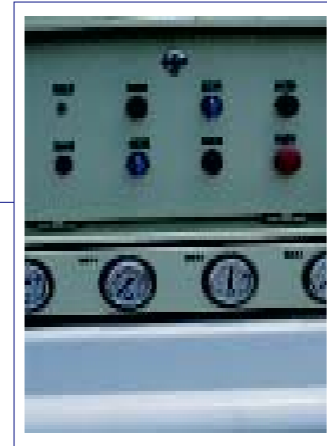
The imported gear box is fixed with vibration damper, which drives hydraulic pump with the power from the truck engine.

结构紧凑的变径弯管，
使搅拌车更便于靠近料斗。
The compact bent tube is convenient to keep
the truck close to the hopper



可手动或遥控选择操纵的臂架多路
阀，使臂架运行平稳可靠

The manually or remote controlled distributor valve of the boom
makes the boom operate steady and reliably.



双重防护主板的电控柜。电
控柜面板及液控压力表盘
布局合理，便于盘控、操作。
The electric control cabinet has
double protected covers. The elec-
tric control panel and manometers
are arranged reasonably and con-
veniently for monitor and operation.



配置紧急停止按钮的前后
支腿操纵手柄，确保动作安
全可靠。
The distributors of front and rear
outriggers are fitted with emer-
gency stop buttons to ensure the
moving safely and reliably.



标准配备的便携式遥控器，
可实现远距离布料臂泵送
作业动作的多功能控制。
Together with the electric system
is a portable remote controller
with multi-function control of
pumping at a distance.

我们的服务永远超越契约!

Our service is always far beyond what we have promised!

中联重科服务宣言/Declaration of ZOOMLION

售后服务全国联网互动——我们的服务与您近在咫尺。
24小时服务承诺——迅捷回应，第一时间为您排忧解难。
标准化服务流程——让你享受中联重科“五星级”服务。
远程监控技术服务体系——每台产品的工作状况，我们尽在掌握。

Service after sales on internet——Our service is at your side
24 Hours' service promises——Immediate reply to solve your problem at once
Standard service procedure——ZOOMLION offers you "five stars" service
System of remote monitored system——Take working circumstance of every
machine from ZOOMLION into our consideration

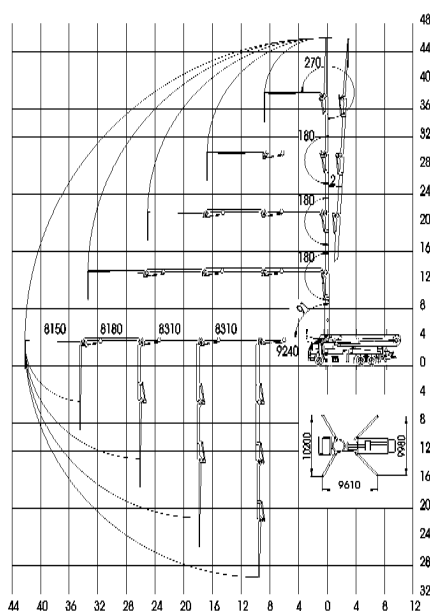
您只需使用我们的产品，其他的，我们来做!
**What you have to do is only to make good use of our
machine. Other things will be done by us!**

ZLJ5420THB125-47

混凝土泵车

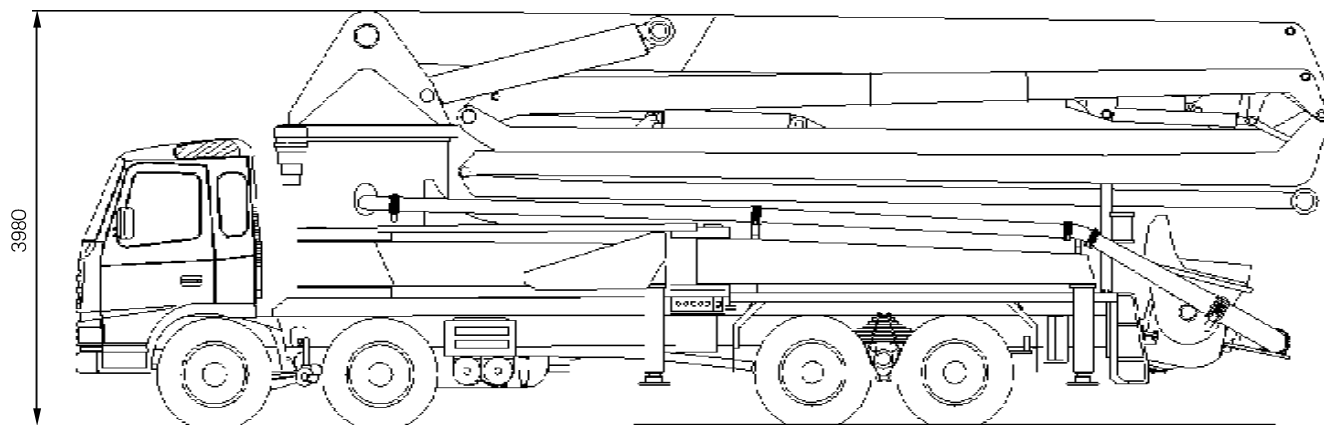
Truck-Mounted Concrete Pump

主要技术参数 Technical data



工作范围 Working range

最大理论输送量 Max theor concrete output	(m ³ /h)	129
最大理论出口压力 Max concrete pressure	(MPa)	12
料斗容积 Hopper volume	(L)	650
上料高度 Filling height on support	(mm)	1540
分配阀形式 Type of distributing valve		S 管阀 S valve
垂直布料高度 Vertical reach	(m)	46.2
水平布料半径 Horizontal reach from center of slewing column	(m)	42.3
布料深度 Depth reach	(m)	33.2
回转角度 Slewing range	(°)	365
输送管直径 Dia. of concrete delivery pipeline	(mm)	125
臂架节数 Number of articulated points		5
各节臂旋转角度 Folding angles of each section	(°)	91/180/180/180/270
端部软管长度 Length of end hose	(m)	4
底盘型号 Model of chassis	VOLVO	FM12
驱动型式 Driven type		8 × 4
轴距 Wheel base	(mm)	1793+4407+1370
轮距 (F/R) Tread(Front/Rear)	(mm)	2028/1835 或 1872
柴油机功率及转速 Engine power and rotation speed	(kW/r/min)	279/1700~1800
柴油机扭矩及转速 Engine torque and r.p.m	(N · m/r/min)	1850/1050~1300
柴油机排放依据标准 Exhaust emission standard of engine		欧洲 III Eur. III
整车最高行驶速度 Max. running speed of vehicle	(km/h)	95
整车最小转弯直径 Min turning dia.	(m)	≤ 22
整车质量 Total weight	(kg)	40600
外形尺寸 (长×宽×高) Overall dimension (length × width × Height)	(mm)	11980 × 2500 × 3980



11980(宽 2500)

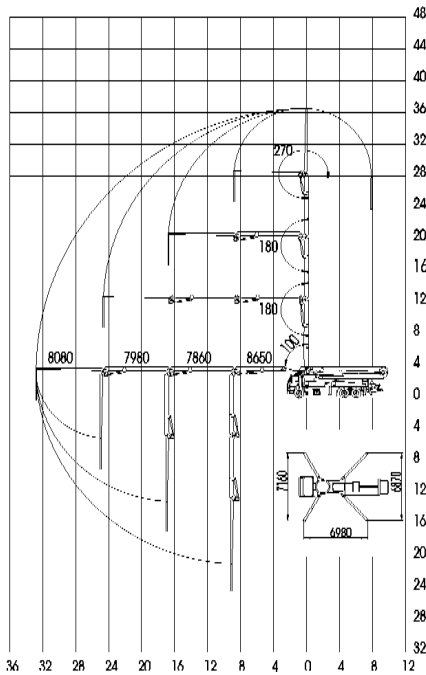
外形尺寸 Overall dimension

ZLJ5291THB125-37

混凝土泵车

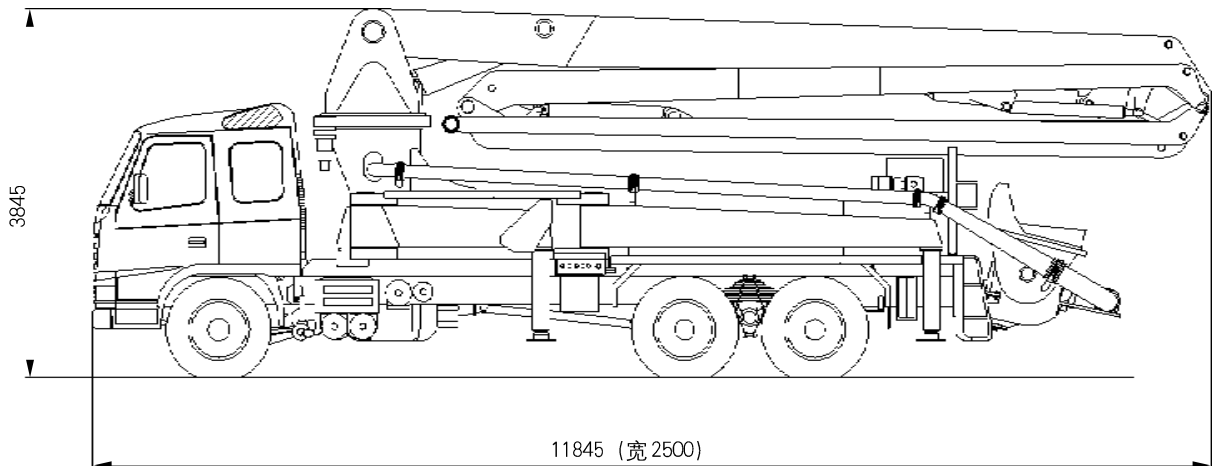
Truck-Mounted Concrete Pump

主要技术参数 Technical data



工作范围 Working range

最大理论输送量 Max theor concrete output	(m ³ /h)	129
最大理论出口压力 Max concrete pressure	(MPa)	12
料斗容积 Hopper volume	(L)	650
上料高度 Filling height on support	(mm)	1540
分配阀形式 Type of distributing valve		S管阀 S valve
垂直布料高度 Vertical reach	(m)	36.6
水平布料半径 Horizontal reach from center of slewing column	(m)	32.6
布料深度 Depth reach	(m)	24.9
回转角度 Slewing range	(°)	365
输送管直径 Dia. of concrete delivery pipeline	(mm)	125
臂架节数 Number of articulated points		4
各节臂旋转角度 Folding angles of each section	(°)	100/180/180/270
端部软管长度 Length of end hose	(m)	4
底盘型号 Model of chassis	VOLVO	FM12
驱动型式 Driven type		6 × 4
轴距 Wheel base	(mm)	4900+1370
轮距 (F/R) Tread(Front/Rear)	(mm)	2028/1835 或 1872
柴油机功率及转速 Engine power and rotation speed	(kW/r/min)	279/1700~1800
柴油机扭矩及转速 Engine torque and r.p.m	(N · m/r/min)	1850/1050~1300
柴油机排放依据标准 Exhaust emission standard of engine		欧洲III Eur. III
整车最高行驶速度 Max. running speed of vehicle	(km/h)	95
整车最小转弯直径 Min turning dia.	(m)	≤ 21
整车质量 Total weight	(kg)	27480
外形尺寸 (长×宽×高) Overall dimension (length × width × Height)	(mm)	11845 × 2500 × 3845



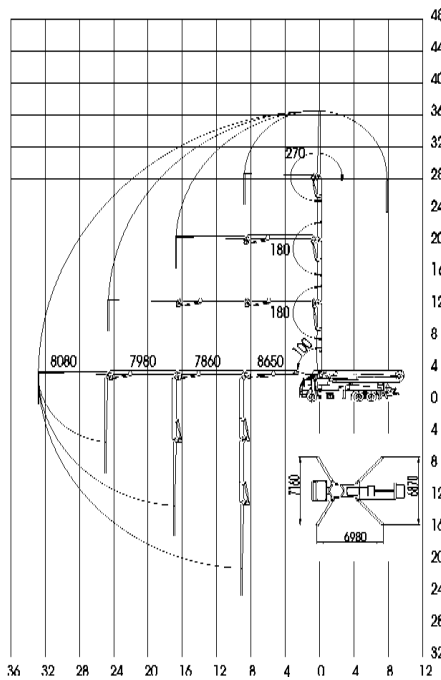
外形尺寸 Overall dimension

ZLJ5280THB125-37

混凝土泵车

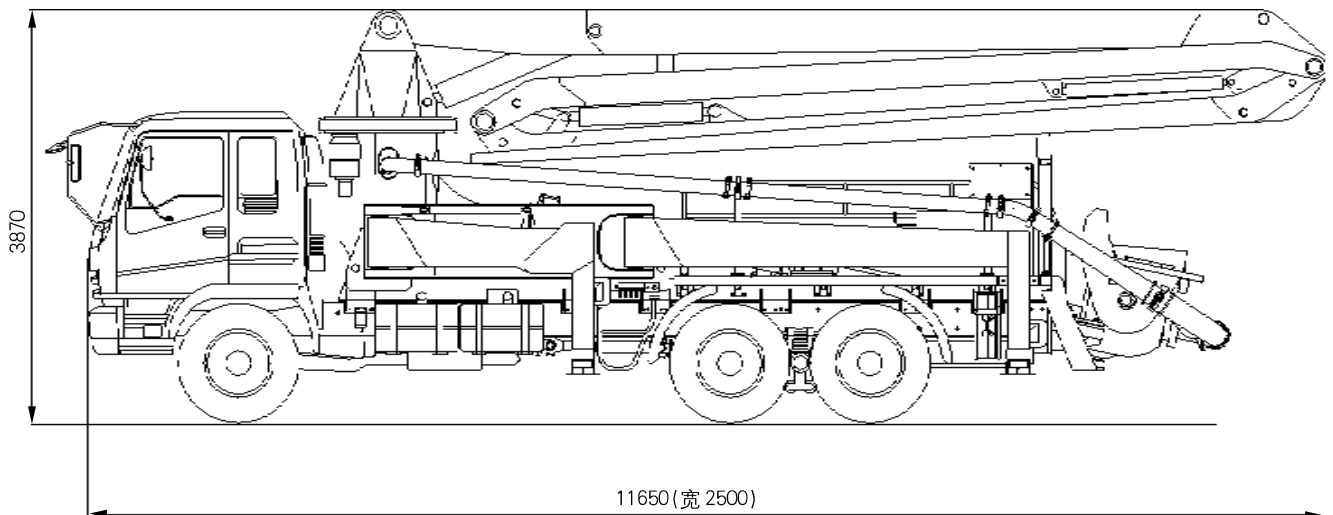
Truck-Mounted Concrete Pump

主要技术参数 Technical data



工作范围 Working range

最大理论输送量 Max theor concrete output	(m ³ /h)	129
最大理论出口压力 Max concrete pressure	(MPa)	12
料斗容积 Hopper volume	(L)	650
上料高度 Filling height on support	(mm)	1540
分配阀形式 Type of distributing valve		S 管阀 S valve
垂直布料高度 Vertical reach	(m)	36.6
水平布料半径 Horizontal reach from center of slewing column	(m)	32.6
布料深度 Depth reach	(m)	24.9
回转角度 Slewing range	(°)	365
输送管直径 Dia. of concrete delivery pipeline	(mm)	125
臂架节数 Number of articulated points		4
各节臂旋转角度 Folding angles of each section	(°)	100/180/180/270
端部软管长度 Length of end hose	(m)	4
底盘型号 Model of chassis	ISUZU	CXZ51Q
驱动型式 Driven type		6 × 4
轴距 Wheel base	(mm)	4595+1310
轮距 (F/R) Tread(Front/Rear)	(mm)	2065/1850
柴油机功率及转速 Engine power and rotation speed	(kW/r/min)	287/1800
柴油机扭矩及转速 Engine torque and r.p.m	(N · m/r/min)	1863/1100
柴油机排放依据标准 Exhaust emission standard of engine		欧洲 II Eur. II
整车最高行驶速度 Max. running speed of vehicle	(km/h)	90
整车最小转弯直径 Min turning dia.	(m)	18.4
整车质量 Total weight	(kg)	28190
外形尺寸 (长×宽×高) Overall dimension (length × width × Height)	(mm)	11650 × 2500 × 3870



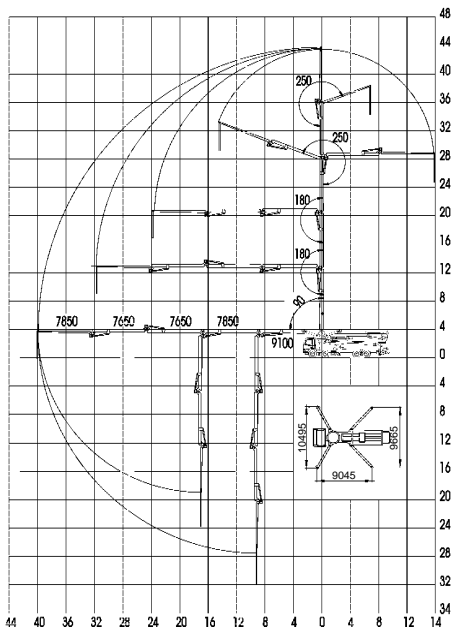
外形尺寸 Overall dimension

ZLJ5380THB125-44

混凝土泵车

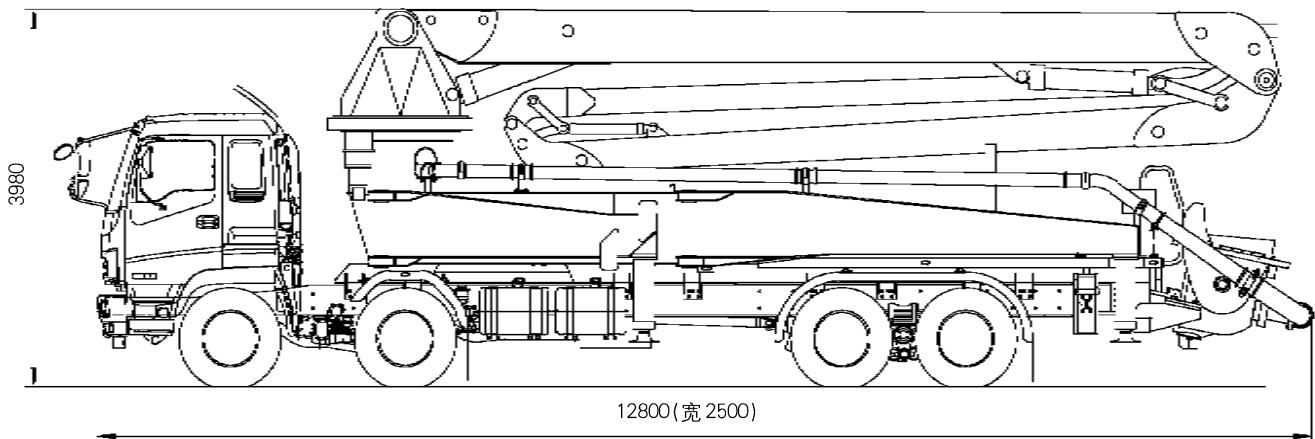
Truck-Mounted Concrete Pump

主要技术参数 Technical data



工作范围 Working range

最大理论输送量 Max theor concrete output	(m ³ /h)	129
最大理论出口压力 Max concrete pressure	(MPa)	12
料斗容积 Hopper volume	(L)	650
上料高度 Filling height on support	(mm)	1540
分配阀形式 Type of distributing valve		S管阀 S valve
垂直布料高度 Vertical reach	(m)	44
水平布料半径 Horizontal reach from center of slewing column	(m)	40
布料深度 Depth reach	(m)	32
回转角度 Slewing range	(°)	370
输送管直径 Dia. of concrete delivery pipeline	(mm)	125
臂架节数 Number of articulated points		5
各节臂旋转角度 Folding angles of each section	(°)	90/180/180/250/250
端部软管长度 Length of end hose	(m)	4
底盘型号 Model of chassis	ISUZU	CXH50T
驱动型式 Driven type		8 × 4
轴距 Wheel base	(mm)	1850+4605+1310
轮距 (F/R) Tread(Front/Rear)	(mm)	2065/1855
柴油机功率及转速 Engine power and rotation speed	(kW/r/min)	265/2000
柴油机扭矩及转速 Engine torque and r.p.m	(N · m/r/min)	1422/1400
柴油机排放依据标准 Exhaust emission standard of engine		欧洲 II Eur. II
整车最高行驶速度 Max. running speed of vehicle	(km/h)	80
整车最小转弯直径 Min turning dia.	(m)	23.8
整车质量 Total weight	(kg)	37800
外形尺寸 (长×宽×高) Overall dimension (length × width × Height)	(mm)	12800 × 2500 × 3980



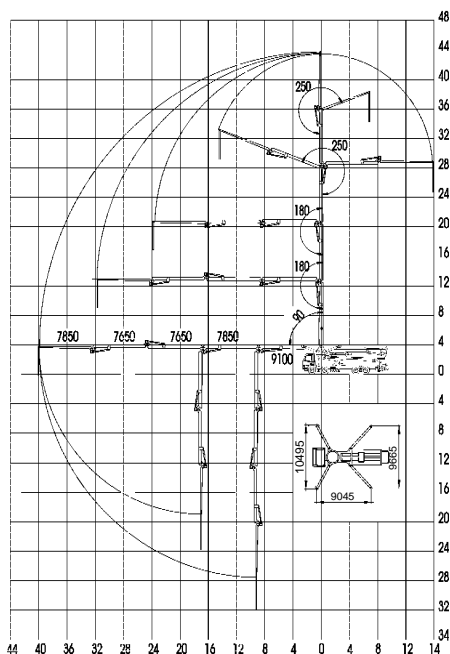
外形尺寸 Overall dimension

ZLJ5391THB125-44

混凝土泵车

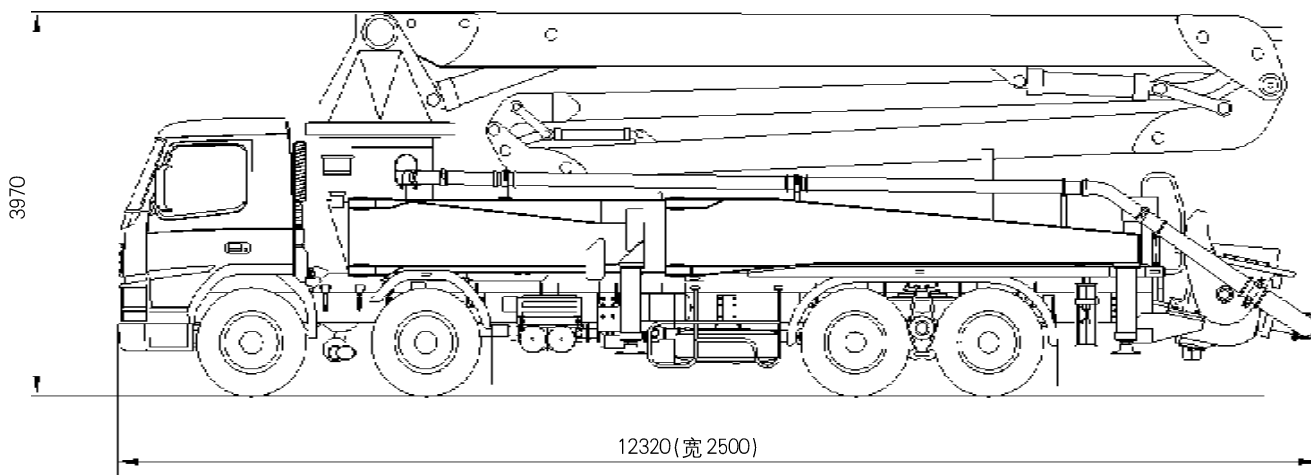
Truck-Mounted Concrete Pump

主要技术参数 Technical data



工作范围 Working range

最大理论输送量 Max theor concrete output	(m ³ /h)	129
最大理论出口压力 Max concrete pressure	(MPa)	12
料斗容积 Hopper volume	(L)	650
上料高度 Filling height on support	(mm)	1540
分配阀形式 Type of distributing valve		S 管阀 S valve
垂直布料高度 Vertical reach	(m)	44
水平布料半径 Horizontal reach from center of slewing column	(m)	40
布料深度 Depth reach	(m)	32
回转角度 Slewing range	(°)	370
输送管直径 Dia. of concrete delivery pipeline	(mm)	125
臂架节数 Number of articulated points		5
各节臂旋转角度 Folding angles of each section	(°)	90/180/180/250/250
端部软管长度 Length of end hose	(m)	4
底盘型号 Model of chassis	VOLVO	FM12
驱动型式 Driven type		8 × 4
轴距 Wheel base	(mm)	1793+4407+1370
轮距 (F/R) Tread(Front/Rear)	(mm)	2028/1835 或 1872
柴油机功率及转速 Engine power and rotation speed	(kW/r/min)	279/1700~1800
柴油机扭矩及转速 Engine torque and r.p.m	(N · m/r/min)	1850/1100~1300
柴油机排放依据标准 Exhaust emission standard of engine		欧洲III Eur. III
整车最高行驶速度 Max. running speed of vehicle	(km/h)	95
整车最小转弯直径 Min turning dia.	(m)	≤ 22
整车质量 Total weight	(kg)	36700
外形尺寸 (长×宽×高) Overall dimension (length × width × Height)	(mm)	12320 × 2500 × 3970



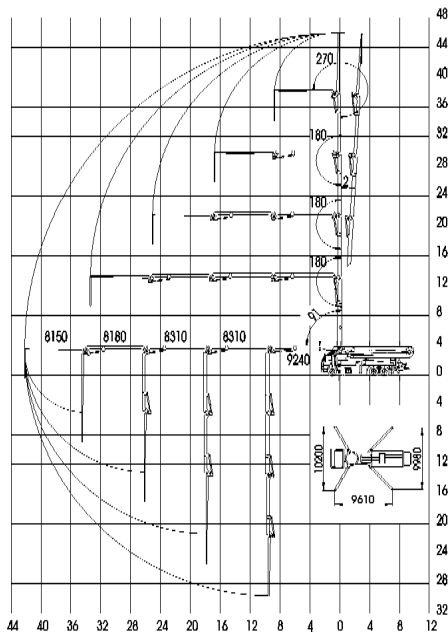
外形尺寸 Overall dimension

ZLJ5410THB125-47

混凝土泵车

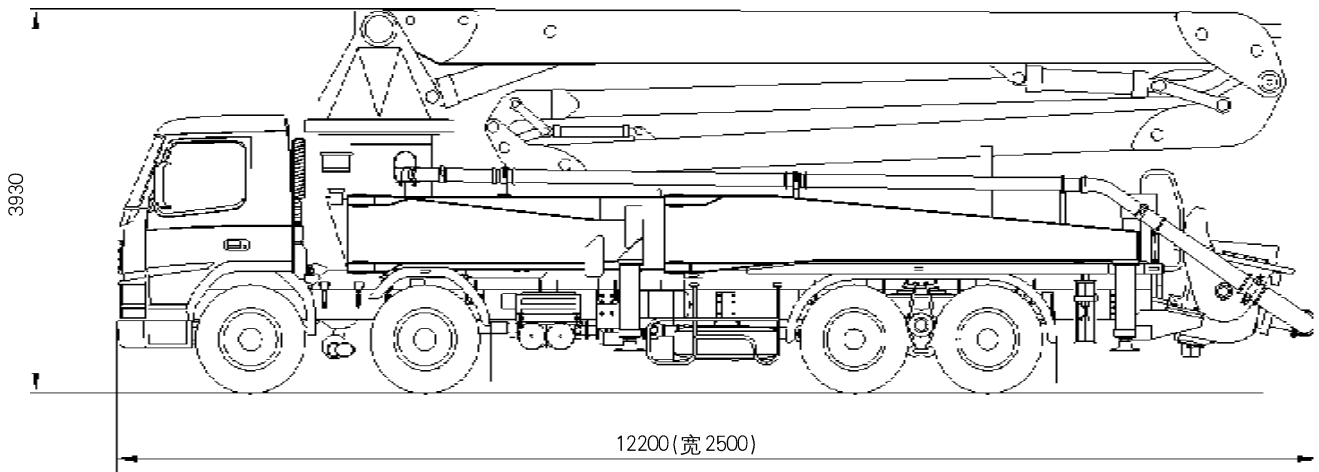
Truck-Mounted Concrete Pump

主要技术参数 Technical data



工作范围 Working range

最大理论输送量 Max theor concrete output	(m ³ /h)	129
最大理论出口压力 Max concrete pressure	(MPa)	12
料斗容积 Hopper volume	(L)	650
上料高度 Filling height on support	(mm)	1540
分配阀形式 Type of distributing valve		S管阀 S valve
垂直布料高度 Vertical reach	(m)	46.2
水平布料半径 Horizontal reach from center of slewing column	(m)	42.3
布料深度 Depth reach	(m)	33.2
回转角度 Slewing range	(°)	365
输送管直径 Dia. of concrete delivery pipeline	(mm)	125
臂架节数 Number of articulated points		5
各节臂旋转角度 Folding angles of each section	(°)	90/180/180/180/270
端部软管长度 Length of end hose	(m)	4
底盘型号 Model of chassis	BENZ	ACTROS4141
驱动型式 Driven type		8 × 4
轴距 Wheel base	(mm)	1700+4600+1350
轮距 (F/R) Tread(Front/Rear)	(mm)	2034/1804
柴油机功率及转速 Engine power and rotation speed	(kW/r/min)	300/1800
柴油机扭矩及转速 Engine torque and r.p.m	(N · m/r/min)	2000/1080
柴油机排放依据标准 Exhaust emission standard of engine		欧洲III Eur. III
整车最高行驶速度 Max. running speed of vehicle	(km/h)	85
整车最小转弯直径 Min turning dia.	(m)	≤ 22
整车质量 Total weight	(kg)	41200
外形尺寸 (长×宽×高) Overall dimension (length × width × Height)	(mm)	12200 × 2500 × 3930



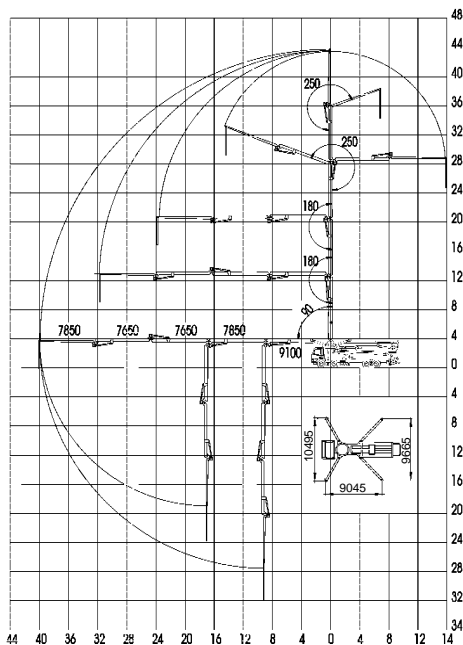
外形尺寸 Overall dimension

ZLJ5392/5393THB125-44

混凝土泵车

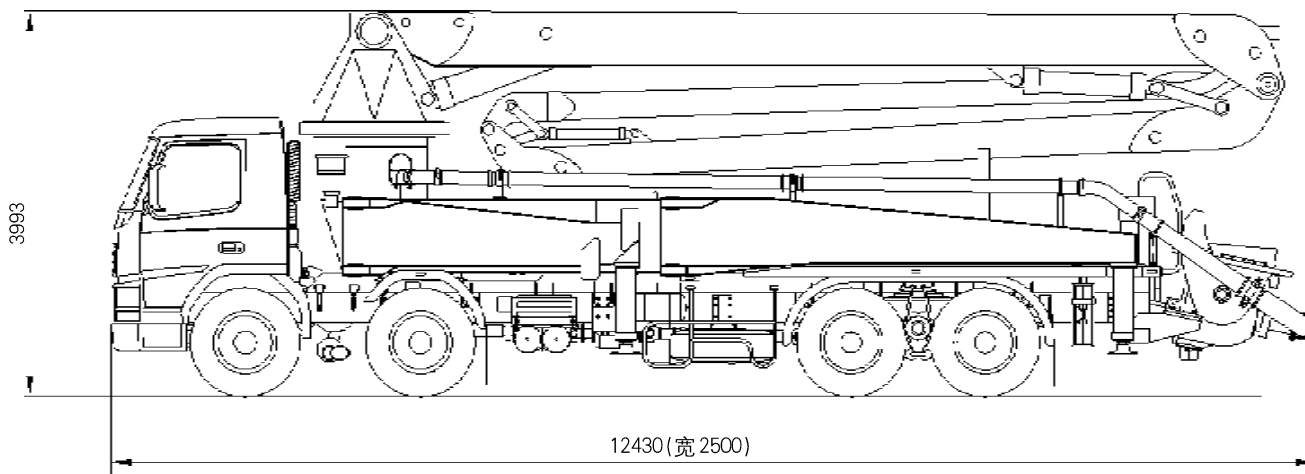
Truck-Mounted Concrete Pump

主要技术参数 Technical data



工作范围 Working range

最大理论输送量 Max theor concrete output	(m ³ /h)	129
最大理论出口压力 Max concrete pressure	(MPa)	12
料斗容积 Hopper volume	(L)	650
上料高度 Filling height on support	(mm)	1540
分配阀形式 Type of distributing valve		S 管阀 S valve
垂直布料高度 Vertical reach	(m)	44
水平布料半径 Horizontal reach from center of slewing column	(m)	40
布料深度 Depth reach	(m)	32
回转角度 Slewing range	(°)	370
输送管直径 Dia. of concrete delivery pipeline	(mm)	125
臂架节数 Number of articulated points		5
各节臂旋转角度 Folding angles of each section	(°)	90/180/180/250/250
端部软管长度 Length of end hose	(m)	4
底盘型号 Model of chassis	BENZ	ACTROS 4140/4141
驱动型式 Driven type		8 × 4
轴距 Wheel base	(mm)	1700+4600+1350
轮距 (F/R) Tread(Front/Rear)	(mm)	2034/1804
柴油机功率及转速 Engine power and rotation speed	(kW/r/min)	290/1800 或 300/1800
柴油机扭矩及转速 Engine torque and r.p.m	(N · m/r/min)	1850/1080 或 2000/1080
柴油机排放依据标准 Exhaust emission standard of engine		欧洲 II、III Eur. II、III
整车最高行驶速度 Max. running speed of vehicle	(km/h)	85
整车最小转弯直径 Min turning dia.	(m)	26
整车质量 Total weight	(kg)	39200
外形尺寸 (长×宽×高) Overall dimension (length × width × Height)	(mm)	12430 × 2500 × 3993



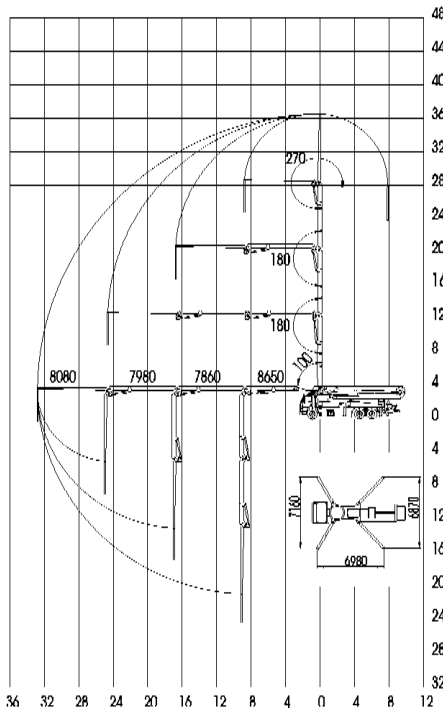
外形尺寸 Overall dimension

ZLJ5292/5293THB125-37

混凝土泵车

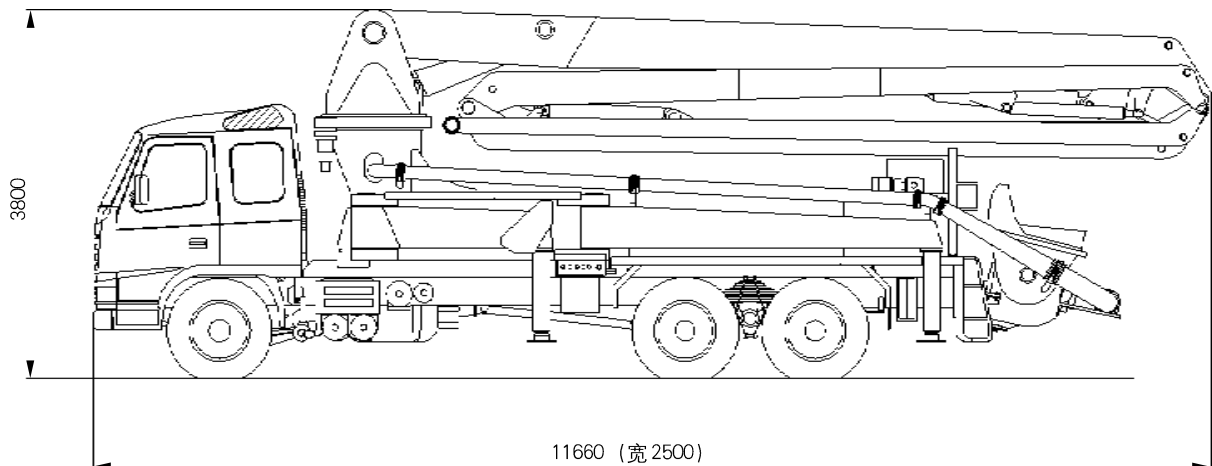
Truck-Mounted Concrete Pump

主要技术参数 Technical data



工作范围 Working range

最大理论输送量 Max theor concrete output	(m ³ /h)	129
最大理论出口压力 Max concrete pressure	(MPa)	12
料斗容积 Hopper volume	(L)	650
上料高度 Filling height on support	(mm)	1540
分配阀形式 Type of distributing valve		S 管阀 S valve
垂直布料高度 Vertical reach	(m)	36.6
水平布料半径 Horizontal reach from center of slewing column	(m)	32.6
布料深度 Depth reach	(m)	24.9
回转角度 Slewing range	(°)	365
输送管直径 Dia. of concrete delivery pipeline	(mm)	125
臂架节数 Number of articulated points		4
各节臂旋转角度 Folding angles of each section	(°)	100/180/180/270
端部软管长度 Length of end hose	(m)	4
底盘型号 Model of chassis	BENZ	ACTROS 3340/3341
驱动型式 Driven type		6 × 4
轴距 Wheel base	(mm)	4500+1350
轮距 (F/R) Tread(Front/Rear)	(mm)	2304/1804
柴油机功率及转速 Engine power and rotation speed	(kW/r/min)	290/1800 或 300/1800
柴油机扭矩及转速 Engine torque and r.p.m	(N · m/r/min)	1850/1080 或 2000/1080
柴油机排放依据标准 Exhaust emission standard of engine		欧洲 II、III Eur. II、III
整车最高行驶速度 Max. running speed of vehicle	(km/h)	85
整车最小转弯直径 Min turning dia.	(m)	≤ 20
整车质量 Total weight	(kg)	28800
外形尺寸 (长×宽×高) Overall dimension (length × width × Height)	(mm)	11660 × 2500 × 3800



外形尺寸 Overall dimension

长沙中联重工科技发展股份有限公司

ChangSha ZoomLion Heavy Industry Science And Technology Development Co., Ltd.

湖南省长沙市银盆南路 361 号 (中联科技园)
Headquarter Address:361 Yinpen(s) Road, Changsha, Hunan, China
(ZOOMLION Fields of Science And Technology)

PC:410013 FAX:0731-8807517

E-mail:xs@zljt.com

<http://www.zljt.com> www.zoomlion.com

销售与技术咨询专线: 0731-8807160 0731-8917079
Special telephone line for sale and technique consulting:0731-8807160 0731-8917079

全国服务监督专线: 800-878-6112

Special telephone line for sale and technique consulting: 800-878-6112

中联重科保留更改产品设计与规格的权利, 届时恕不另行通知。
We reserve the right to change specification without notice.